



WINTER 2022 Newsletter

News and Events for ElecTel Cooperative Federal Credit Union Members

Scholarship Applications



The ElecTel Cooperative Federal Credit Union Scholarship Selection Committee will begin accepting applications for the 2022–2023 academic year on **Monday, February 14th**. Two \$2,000 scholarships will be awarded to deserving ElecTel Cooperative FCU Members. Application deadline is **Friday, April 29th**.



THE PERFECT TOOL FOR THE JOB



HOME EQUITY LINES OF CREDIT (HELOC)

FEATURES:

- Rates as low as 3.25% APR*
- Borrow up to 90% of your home's value
- Lines of credit up to \$100K & MORE!

APPLY TODAY!

*APR = Annual Percentage Rate. See credit union for details.

Turn the Curve Into the New Year!



Refinance your auto
loan & save up to **2% APR***

PUT IT IN DRIVE

*APR = Annual Percentage Rate. See credit union for details.

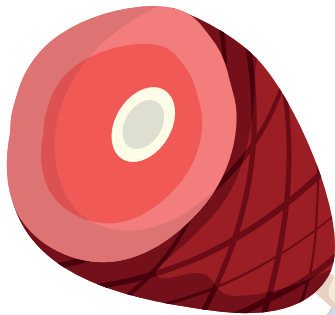
Your Co-Op, Your Credit Union

ElecTel.org

Congratulations
to our winners!

Holiday Ham

Tonya C.
Claudine W.
Nancy C.
Angela H.
Lillie W.



Backpack Contest

John M.
Anthony C.
Shannon D.



Branch Locations

Main Office
3400 Sumner Blvd.
Raleigh, NC 27616

Wake Forest Branch
414 E. Wait Ave.
Wake Forest, NC 27587

Hillsborough Branch
2500 Highway 86 South
Hillsborough, NC 27278



Save the Date!

Annual Membership Meeting
Wednesday, April 27
Raleigh, NC

More info to come!

Holiday RATE PAGE



Say goodbye to
credit rates over 20% today!

**ElecTel Visa®
Credit Card**

5.90%
APR
on balance transfers
for 15 months

APPLY TODAY!

*APR = Annual Percentage Rate. See credit union for details.

Holiday Closings

Martin Luther King Jr. Day
Monday, January 17

President's Day
Monday, February 21

The ElecTel Cooperative Federal Credit Union Privacy Policy can be accessed online at any time through our website.



ElecTel.org



Toll Free: 800-849-5600

This credit union is federally insured by the National Credit Union Administration and is an Equal Housing Lender.

